

Note that this version (V16 1/10/2011) has reversed TXO and RXI pins
Pinout will change to match existing silk in next version



SFE

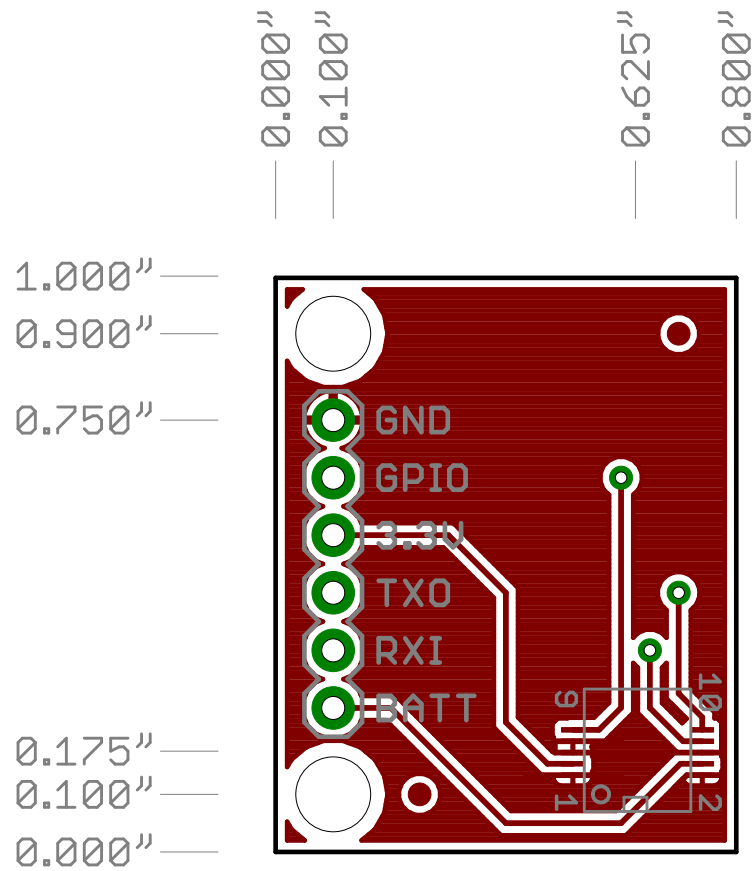
TITLE: gs407breakout-v16

Document Number:

REV:

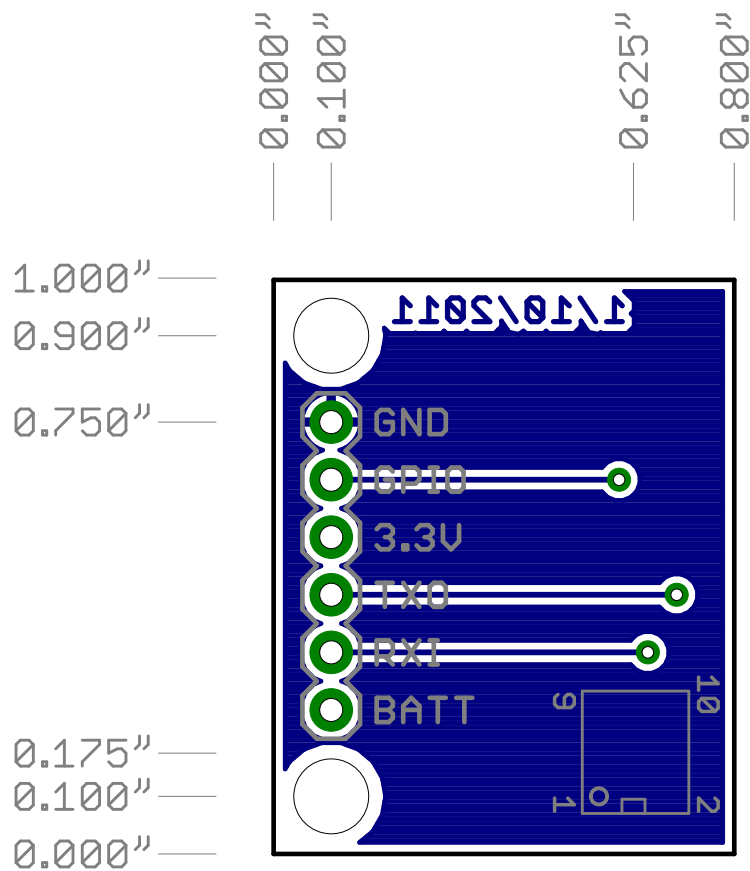
Date: 2/24/2011 9:54:56 AM

Sheet: 1/1



Released under the Creative Commons Attribution Share-Alike 3.0 License
<http://creativecommons.org/licenses/by-sa/3.0>
 Design by: T. Holmberg, M. Grusin

Note that this version (V16 1/10/2011) has reversed TX0 and RXI pins
 Pinout will change to match existing silk in next version



Released under the Creative Commons Attribution Share-Alike 3.0 License
<http://creativecommons.org/licenses/by-sa/3.0>
 Design by: T. Holmberg, M. Grusin

Note that this version (V16 1/10/2011) has reversed TX0 and RXI pins
 Pinout will change to match existing silk in next version